

**User's Guide**  
Model: 30554



**DECT Corded/Cordless Telephone**  
Your new DECT telephone system is EXPANDABLE up to 8 handsets.



**Introduction**

**CAUTION:** When using telephone equipment, there are basic safety instructions that should always be followed. Refer to the important safety instructions section in this user's guide for more information. **IMPORTANT:** Since cordless phones operate on electricity, you are suggested to have at least one phone in your home that is not cordless, in case of power outage.

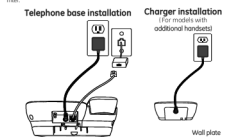
**Parts Checklist**

Make sure your package includes the items shown below.



**Telephone base and charger installation**

1. Plug the smaller end of the power adapter into the power jack at the back of the telephone base.
  2. Plug one end of the telephone line into the jack at the back of the telephone base.
  3. Plug the other end of the telephone line into an electrical outlet not controlled by a wall switch.
- You have 25k high speed internet service, a DSL. Refer is required not included. Contact your DSL service provider for more information about DSL filter.

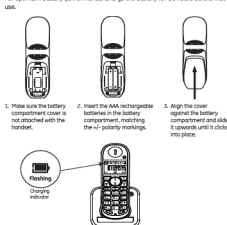


**Telephone jack requirements**  
To use this phone, you need a RJ11 type modular telephone jack, which might look like the one pictured here, installed in your home. If you do not have a modular telephone jack, you can purchase one that fits out from your home or online.

1. Use the power adapter that came with the cordless phone.
2. Be sure that the power adapter is not plugged into a power outlet that is not grounded. If you need a power adapter for your phone, contact your local retailer.

**Battery Installation**

For optimum battery performance, charge the battery for 16 hours before first use.



1. Place the handset into the base for charging as shown.
2. Insert the AA rechargeable batteries in the battery compartment, matching the 4-way polarity markings.
3. Align the cover against the battery compartment and slide the 4-way polarity marks into place.

**CAUTION:** To avoid the threat of fire or personal injury, use only the CCT Tech Global Limited approved model (30554) 1.7V Ni-MH when in compliance with this unit.

**Wall mount installation (optional)**

The telephone comes with a base bracket that you can install in two different ways.

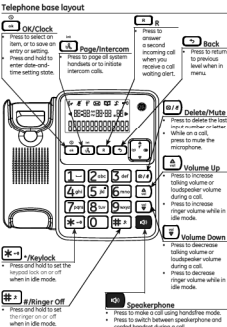
1. Plug one end of the telephone line into a desk, connect the base bracket to the upper part of the bottom of the telephone base.
2. To ensure the phone on wall, connect the base bracket to the lower part of the bottom of the telephone base.
3. Plug the other end of the telephone line into an electrical outlet not controlled by a wall switch.



If you are mounting the telephone on a wall, install the telephone base as described below.

1. If the telephone base is on a desk, align the marks at the upper part of the bottom of the telephone with the studs on the base bracket as shown below. Lock the base bracket to the telephone base by pushing the studs into the holes securely. The bottom of the telephone base now has a surface that is flat for the purpose of mounting the phone on a wall.
2. Plug the power adapter into an electrical outlet. Be sure to avoid sitting on electrical outlet that is controlled by a wall switch.
3. Lift the corded handset to test the connection. If you hear a dial tone, the installation is complete.

**Telephone base layout**



**Handset layout**

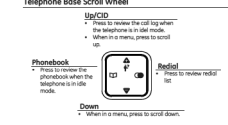


**Telephone Base Display Icons**

The following table gives a description of the screen display icons on the telephone base:

| Icon              | Meaning  |
|-------------------|--|
| [Signal strength] | • Displays when reviewing the phonebook.   |
| [Call log]        | • Displays when keypad lock is turned on.  |
| [Incoming call]   | • Flashes when there is an incoming call.  |
| [New voice mail]  | • Displays when there is a new voice mail message. (This feature is available only if you have subscribed to voice mail service from your telephone service provider.) |
| [Ringer off]      | • Displays when the ringer is turned off.  |

**Telephone Base Scroll Wheel**



**Handset Display Icons**

The following table gives a description of the screen display icons on the cordless handset.

| Icon                   | Meaning   |
|------------------------|---|
| [Signal strength]      | • Displays when the telephone base is within reception range.   |
| [Handset out of range] | • Flashes when the telephone base is out of range.  |
| [Battery level]        | • Displays when reviewing the phonebook.  |
| [Low battery]          | • Displays when the battery is full.  |
| [Low battery warning]  | • Flashes slowly when battery has less than 50% capacity.   |
| [Low battery warning]  | • Flashes rapidly when battery has less than 25% capacity.  |
| [Incoming call]        | • Flashes when there is an incoming call.   |
| [New voice mail]       | • Flashes when there is a new voice mail message. (This feature is available only if you have subscribed to voice mail service from your telephone service provider.) |
| [Ringer off]           | • Displays when the ringer is turned off.   |
| [Missed call]          | • Displays when there is a missed call.   |
| [Call log]             | • Displays when reviewing a call log with old records.  |
| [Handset mode]         | • Displays when the handset is in speakerphone mode.  |

**Handset Menu Tree**

The following table shows the menu tree for the handset.

| Main Menu     | Sub-Menu 1   | Sub-Menu 2   |
|---------------|--------------|--------------|
| PROCEEDING    | ENTER NUMBER | ENTER NUMBER |
| CALL LOG      | CALL LOG     | CALL LOG     |
| CALL LOG      | CALL LOG     | CALL LOG     |
| CALL LOG      | CALL LOG     | CALL LOG     |
| PERSONAL SET  | HANDSET TONE | RING VOLUME  |
| PERSONAL SET  | PERSONAL SET | PERSONAL SET |
| PERSONAL SET  | PERSONAL SET | PERSONAL SET |
| CLOCK & ALARM | DATE/TIME    | DATE/TIME    |
| CLOCK & ALARM | DATE/TIME    | DATE/TIME    |
| CLOCK & ALARM | DATE/TIME    | DATE/TIME    |
| ADVANCED SET  | ADVANCED SET | ADVANCED SET |
| ADVANCED SET  | ADVANCED SET | ADVANCED SET |
| ADVANCED SET  | ADVANCED SET | ADVANCED SET |

**Initial Settings**

You cannot make calls, change this setting according to your telephone line.

1. Press **ADVANCED SET**.
  2. Press **DIAL MODE**.
  3. Select the desired setting.
- Registering a handset**  
The telephone system can support up to a total of 4 cordless handsets. Handsets that were included with your main base are pre-registered.
- Default language**  
To set or register a handset:  
1. Press **ADVANCED SET**.
- 2. Press **LANGUAGE**.
- 3. Select the desired language.

**Ringer volume**  
You can set the handset ringer volume from level 1 to level 4 or turn the ringer off.  
1. Press **ADVANCED SET**.
- 2. Press **RINGER VOLUME**.
- 3. Select the desired setting.
- 4. Press **OK**.

**Ringer tone**  
You can select from 10 ringer tones (Melody 1 to 10).  
1. Press **ADVANCED SET**.
- 2. Press **HANDSET TONE**.
- 3. Select the desired ringer tone.
- 4. Press **OK**.

**NOTE:**  
1. You will hear a beep sound if the handset registration is successful. The handset screen displays "Handset OK", where A is number from 1 to 4.  
2. The product is compatible with model 30554 cordless handsets only.

**Deny a handset**  
1. Press **ADVANCED SET**.
- 2. Press **UNREGISTER**.
- 3. Select the handset to deny.
- 4. Press **OK**.

**First ring**

To set the first ring "ON" or "OFF":

1. Press **ADVANCED SET**.
  2. Press **CLOCK & ALARM**.
  3. Press **DATE/TIME**.
  4. Press **LANGUAGE**.
  5. Select the desired setting.
- Handset Settings**  
To adjust the handset settings according to your telephone line and language:  
1. Press **ADVANCED SET**.
- 2. Press **PERSONAL SET**.
- 3. Press **LANGUAGE**.
- 4. Select the desired setting.

**Ringer volume**  
You can set the handset ringer volume from level 1 to level 4 or turn the ringer off.  
1. Press **ADVANCED SET**.
- 2. Press **RINGER VOLUME**.
- 3. Select the desired setting.
- 4. Press **OK**.

**Ringer tone**  
You can select from 10 ringer tones (Melody 1 to 10).  
1. Press **ADVANCED SET**.
- 2. Press **HANDSET TONE**.
- 3. Select the desired ringer tone.
- 4. Press **OK**.

**NOTE:**  
1. You will hear a beep sound if the handset registration is successful. The handset screen displays "Handset OK", where A is number from 1 to 4.  
2. The product is compatible with model 30554 cordless handsets only.

**Deny a handset**  
1. Press **ADVANCED SET**.
- 2. Press **UNREGISTER**.
- 3. Select the handset to deny.
- 4. Press **OK**.

**Date format**

To set the date format:

1. Press **ADVANCED SET**.
  2. Press **CLOCK & ALARM**.
  3. Press **DATE/TIME**.
  4. Press **LANGUAGE**.
  5. Select the desired setting.
- Date and time**  
If you cannot make calls, change this setting according to your telephone line and the default setting: "TIME".  
1. Press **ADVANCED SET**.
- 2. Press **CLOCK & ALARM**.
- 3. Press **DATE/TIME**.
- 4. Press **LANGUAGE**.
- 5. Select the desired setting.

**NOTE:**  
1. If the time is 3.34 pm, and you have chosen the 24-hour time format, press 12:00:00.  
2. If the time is 3.34 pm, and you have chosen the 12-hour time format, press 12:00:00.

**Alarm**  
The alarm can be programmed to sound once or daily for one minute. The alarm setting is independent of each handset.  
1. Press **ADVANCED SET**.
- 2. Press **CLOCK & ALARM**.
- 3. Press **ALARM**.
- 4. Press **ALARM TONE**.
- 5. Select the desired setting.

**NOTE:**  
1. The alarm sounds every day at the set time.  
2. The alarm sounds daily at the set time.  
3. The alarm sounds daily at the set time.  
4. The alarm sounds daily at the set time.

**Alarm tone**  
You can select from 3 alarm melodies.  
1. Press **ADVANCED SET**.
- 2. Press **CLOCK & ALARM**.
- 3. Press **ALARM TONE**.
- 4. Select the desired alarm tone.

