

User's Guide

Model: EX30011

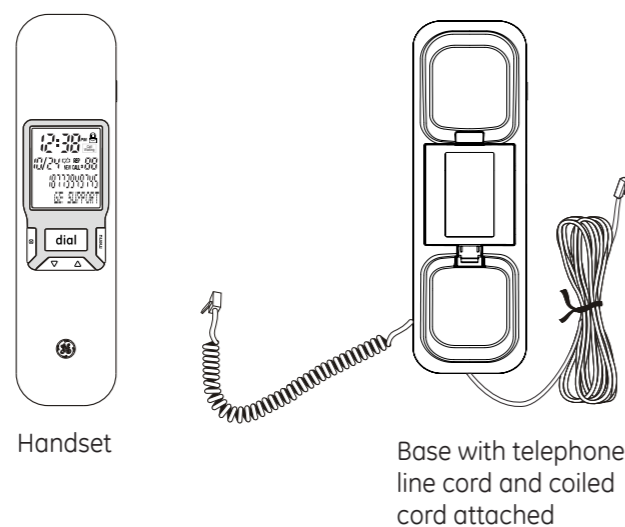


SLIMLINE CORDED PHONE WITH CALLER ID



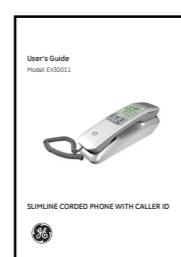
Parts checklist

Your telephone package includes the items shown below.



Handset

Base with telephone line cord and coiled cord attached



User's guide

1

Before You Begin

Telephone Jack Requirements

To use this phone, you need an RJ11C type modular telephone jack installed. If you do not have a modular jack, call your telephone service provider to find out how to have one installed. If you have DSL high speed Internet service, a DSL filter is required (not included). Contact your DSL service provider for more information about DSL filters.

Battery installation

IMPORTANT: The caller ID records and memory location records will be lost in approximately one minute after the batteries are removed from the base. Please read the instructions before replacing the batteries and have the batteries ready before replacement.

Your Caller ID phone uses 3 AA-size alkaline batteries for receiving and storing Caller ID records and for the numbers you use for memory dialing.

1. If the telephone line cord is connected, disconnect it from the wall.
2. Press on the tab to open the battery compartment cover on the base as shown in figure 1 below.
3. Insert 3 AA alkaline batteries (not included) into the compartment matching the engraving in the battery compartment as shown in figure 2 below.
4. Replace the battery compartment cover.
5. Re-connect the telephone line cord to the wall jack.

CAUTION: If the telephone will not be used for an extended period of time, remove the batteries from the base to prevent possible leakage.



is a trademark of
The General Electric Company,
and is under license by
CCT Tech Global Limited,
Central, Hong Kong

2

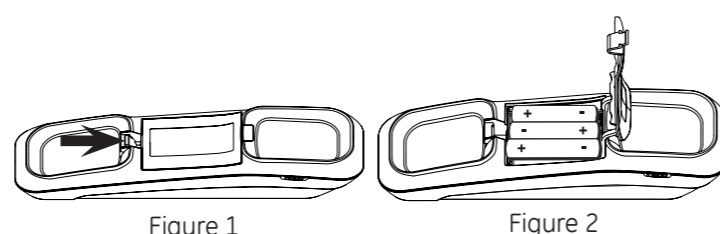


Figure 1

Figure 2

Telephone installation

Installing on a desk or table

1. Plug the coiled handset cord into the bottom of the handset.
2. Plug the telephone line cord into a modular wall plate (not included) as shown in figure 1 below.
3. Store the excess telephone line cord in the grooves under the base as shown in figure 2 below.
4. Position the base with the larger end facing up as shown in figure 1 below, and then place the handset onto the base.

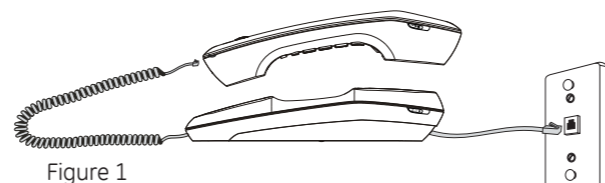


Figure 1

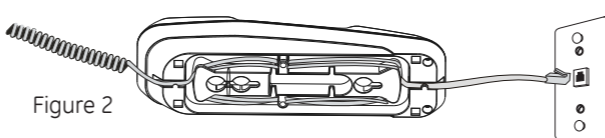


Figure 2

3

Installing on a wall

1. Rotate the base until the engraved text "TOP" on the bottom of the base is correctly oriented.
2. Hold the straight end of the line cord so that about 2-3 inches of cord is available to plug into jack. Then route the remaining cord through the grooves under the base and wrap the excess cord around the posts on the back of the base as shown in figure 3 below.
3. Plug the line cord into the wall jack. Slip the mounting holes on the base over the wall plate posts and firmly slide the unit down into place.
4. Plug the coiled cord into the bottom of the handset.
5. Place the handset onto the base. Check installation by picking up handset to check for dial tone.

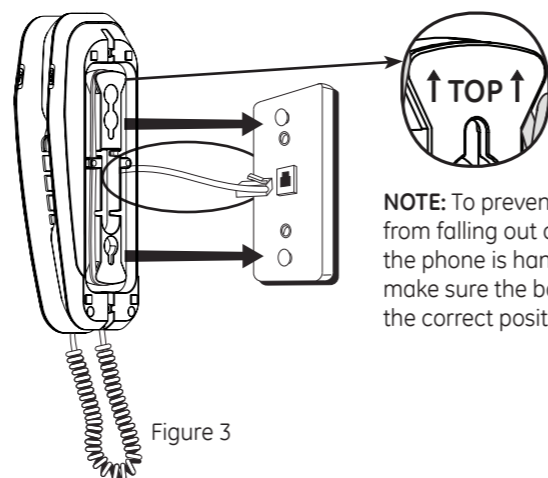
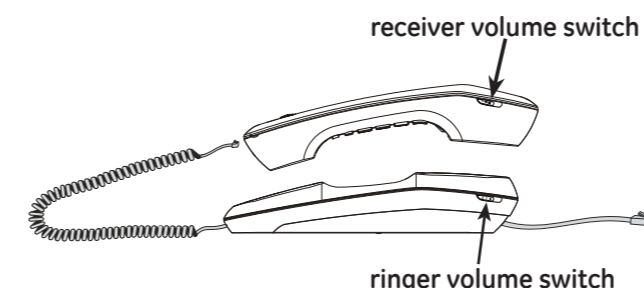
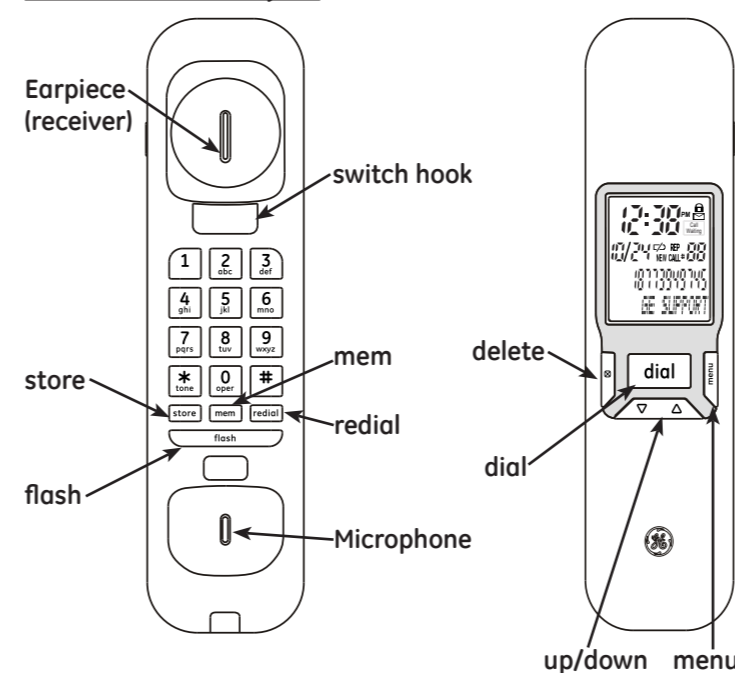


Figure 3

4

NOTE: To prevent the handset from falling out of the cradle while the phone is hanging on the wall, make sure the base is rotated to the correct position as shown.

Base and handset Layout



5

Telephone operation

Make a call

1. Lift the handset from the base.
2. Dial the number.
3. Return the handset to the base to hang up.

Answer a call

1. Lift the handset from the base when the telephone rings.
2. Return the handset to the base to hang up.

Redial

Lift the handset and then press redial to call the last dialed number (maximum of 32 digits).

Flash

Press **flash** to use custom calling services such as call waiting. Custom calling services are provided by your telephone service provider.

Receiver volume

The listening volume can be adjusted to 3 different levels by adjusting the receiver volume switch.

- ☐ = low
- ▒ = medium
- = high

Ringer volume

The ringer volume can be adjusted to 3 different levels by adjusting the ringer volume switch.

- 🔇 = silent
- 🔔 = low
- 🔔 = high

6

Telephone settings

IMPORTANT: Do not plug the telephone into the wall jack while setting up the Caller ID menu because an incoming call may invalidate the information not yet saved.

Viewing the Set Up menu

You can view the Set Up menu structure as follows:

1. Place the handset in the cradle of the telephone base.
2. Press **menu**. The screen displays **DATE/TIME**.
3. Press **Δ** or **∇** to scroll the menu structure and view the submenus (**DATE/TIME**, **LANGUAGE**, **CONTRAST**, **LOCAL AREA CODE**, **LONG DIST CODE**, **LOCK**, **CHANGE PIN ?**, **T/P DIAL MODE**, and **FLASH TIME**).

NOTE: You may press the **del** key anytime to exit the Set Up menu. If no keys are pressed within 10 seconds, the phone automatically exits the Set Up menu and returns to the NO CALLS summary screen.

Setting date/time

You can set the date (month and day) and time (hour and minute) of the telephone unit.

1. Press **menu**. The screen displays **DATE/TIME**.
2. Press **menu** again to show the current hour setting.
3. Press **Δ** or **∇** to select the desired digits for hour setting:
 - 0 to 23 for 24-hour format
 - 1 to 12 for 12-hour format
4. Press **menu** to confirm your setting and move to the minute setting.
5. Press **Δ** or **∇** to select the desired digits for minute setting (00 to 59).
6. Press **menu** to confirm your setting and move to the month setting.

7

7. Press **Δ** or **∇** to select the desired digits for month setting (1 to 12).
8. Press **menu** to confirm your setting and move to the day setting.
9. Press **Δ** or **∇** to select the desired digits for day setting (01 to 31).
10. Press **menu** to confirm your setting and move to the Time Format.
11. Press **Δ** or **∇** to select the desired time format setting (12H or 24H).
12. Press **menu** to confirm your setting.

The date and time will be updated, every time a FSK Caller ID message has been received.

If a DTMF Caller ID has been received, then it will get the date and time from the system clock of the phone.

NOTE: The phone returns to idle mode if no key has been pressed for 10 seconds or if the delete key is pressed before the completion of the current operation. The phone will time out and return to idle mode without changing the current time.

Setting the language

You can select **ENGLISH**, **RUSSIAN**, **ROMANIAN**, **BULGARIAN**, **TURKISH**, **POLISH**, **GREEK**, **SPANISH** or **FRENCH** as the display language. The default setting is **ENGLISH**.

1. Place the handset in the cradle of the telephone base.
2. Press **menu**. The screen displays **DATE/TIME**.
3. Press **Δ** or **∇** until **LANGUAGE** appears.
4. Press **menu** to show the current language setting.
5. Press **Δ** or **∇** to select the desired language.

8

6. Press **menu** to again to store your language setting.

Setting the LCD contrast

This setting allows you to adjust the display contrast and viewing angle for easier readability.

1. Place the handset in the cradle of the telephone base.
2. Press **menu**. The screen displays **DATE/TIME**.
3. Press **Δ** or **∇** until **CONTRAST** appears.
4. Press **menu** to show the current contrast setting. There are five levels of contrast (1 to 5), with the default set to 3.
5. Press **Δ** to increase the contrast or **∇** until **CONTRAST** to decrease the contrast.
6. Press **menu** again to store your contrast setting.

Setting the local area code

The Caller ID feature uses the programmed area code to determine the number format to display when a valid Caller ID signal is received.

1. Place the handset in the cradle of the telephone base.
2. Press **menu**. The screen displays **DATE/TIME**.
3. Press **Δ** or **∇** until **LOCAL AREA CODE** appears.
4. Press **menu** to show the current local area code. The default is ----.
5. The first digit flashes, indicating that it is ready to accept the new area code entry.
6. Press **∇** to select the first digit (0 to 9). When the desired number is flashing, press **Δ** to confirm and advance to the next digit.
7. Repeat steps 5 and 6 until you have entered all the digits for

9

your area code.

-OR-

Press **0** to **9** on the dial key pad directly to enter the local area code. The cursor moves to the next digit automatically.

8. Press **menu** again to store your new local area code.

NOTE: If you make a mistake, press the **del** key to reset your entries.

Setting the long distance code

You can configure your phone to store a 1-digit long distance code.

1. Place the handset in the cradle of the telephone base.
2. Press **menu**. The screen displays **DATE/TIME**.
3. Press **Δ** or **∇** until **LONG DIST CODE** appears.
4. Press **menu** to show the current long distance code.
5. Press **Δ** or **∇** to select 1, 0, or **<space>** (default).
6. Press **menu** again to store your new long distance code.

Activating or deactivating call lock

You can activate or deactivate call lock on your phone.

To activate call lock

1. Place the handset in the cradle of the telephone base.
2. Press **menu**. The screen displays **DATE/TIME**.
3. Press **Δ** or **∇** until **LOCK** appears.
4. Press **menu**. The screen displays **CALL LOCK ON ?**
5. Press **menu** again. The screen displays **CALL LOCK ON !** The call lock icon appears at the corner.

To deactivate call lock

1. Place the handset in the cradle of the telephone base.

10

- Press **menu**. The screen displays **DATE/TIME**.
- Press Δ or ∇ until **LOCK** appears.
- Press **menu**. The screen displays **CALL LOCK OFF ?**
- Press **menu** again. The screen displays **ENTER PIN CODE**. The first digit flashes.
- Press **0** to **9** on the dial key pad to complete the entry for PIN code. The default is 0000.
- If the PIN code is correct, the screen displays **CALL LOCK OFF !** If the PIN code is incorrect, the screen displays **INCORRECT PIN !** and the deactivation fails.

NOTE: If you make a mistake, press the **del** key to reset your entries.

Changing PIN

You can change the PIN on your phone.

- Place the handset in the cradle of the telephone base.
- Press **menu**. The screen displays **DATE/TIME**.
- Press Δ or ∇ until **CHANGE PIN ?** appears.
- Press **menu**. The screen displays **ENTER PIN CODE**. The first digit flashes.
- Press **0** to **9** on the dial key pad to complete the entry for PIN code. The default is 0000.
- After a correct PIN is entered, the screen displays **ENTER NEW PIN**.
- Press **0** to **9** on the dial key pad to enter the new PIN. The screen displays **RE-ENTER PIN**.
- Press **0** to **9** on the dial key pad to re-enter the new PIN. The screen displays **PIN SAVED!** The PIN code is changed.

Setting the dialing mode

11

You can choose between touch-tone dialing or pulse (rotary) dialing for your telephone. The telephone is preset for touch-tone dialing.

- Place the handset in the cradle of the telephone base.
- Press **menu**. The screen displays **DATE/TIME**.
- Press Δ or ∇ until **T/P DIAL MODE** appears.
- Press **menu** to show the current dialing mode.
- Press Δ or ∇ to select either **TONE DIAL** or **PULSE DIAL**.
- Press **menu** again to store your new dialing mode.

Setting the flash time

Flash time is the value used by either the local telephone company or PBS system to identify a soft "on-hook" signal. You can set the flash time for your phone.

- Place the handset in the cradle of the telephone base.
- Press **menu**. The screen displays **DATE/TIME**.
- Press Δ or ∇ until **FLASH TIME** appears.
- Press **menu** to show the default flash time setting.
- Press Δ or ∇ to change the flash time value (**100 MS** to **900 MS**, each increment is 100 MS).
- Press **menu** again to store your new flash time.

Memory

You can store a maximum of 10 entries in the **0-9** memory locations.

To store a number in memory

- Lift the handset, then press **store**.
- Press a memory location key (**0-9**).
- Press **store** again.

12

- Enter the number (up to 16 digits), and then press store again.
- Return the handset to the base.

To store redial number in memory

- Lift the handset, then press **store**.
- Press the desired memory location key (**0-9**).
- Press **store**.
- Press **redial**, and then press **store** again.
- Return the handset to the base.

To copy caller ID memory to user memory

- Pick the handset.
- Press the **store** key.
- Press Δ or ∇ to display the number you want to copy.
- Press the **store** key.
- Press **0-9** for the memory location. If the memory location is occupied, the displayed number flashes.
- Press store to save the number and name. The screen displays **SAVED !**

To add a pause to a memory location

You can insert a dialing pause in the dialing sequence when storing a number requiring a pause.

- Follow the steps in the section **To store a number in memory** on page 12.
- Press **redial** in the dialing sequence where a pause is required (the pause time is approximately four seconds).

To change a stored number

Follow the same steps as the section **To store a number in**

13

memory on page 12. The new numbers will overwrite the existing numbers.

To dial a number from memory

- Lift the handset.
- Press **mem** followed by the desired location button (0-9) to call.

-OR-

- Press **dial** when the handset is on the base.
- Press Δ or ∇ to select the desired memory location.
- Lift the handset to call.

To review a number stored in memory

- Press the **dial** key.
- Press Δ or ∇ to select the desired memory location. The number shows on the display.

To erase a stored number

- Press Δ or ∇ to select the desired memory location.

-OR-

- Press the **store** key and then press the desired memory location (**0-9**) to locate the record.
- Press the **del** key. The screen displays **"ERASE MEM ?"**
- Press the **del** key again to erase the stored number. The screen displays **"EMPTY !"** and all records are erased.

Caller ID

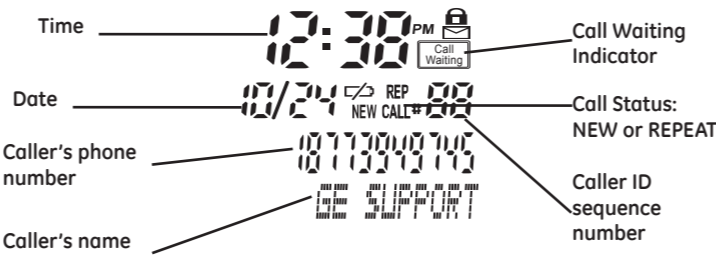
IMPORTANT: To use the Caller-ID capabilities of this telephone system, you must subscribe to Caller-ID services from your service provider. Check with your telephone service provider for details.

Summary Screen

The Summary Screen shows the current time, date, and number

14

of new calls to be reviewed. It displays until any key is pressed. Within 60 seconds of receiving a new call, the Summary Screen appears.



Receiving and storing CID records

The unit receives and displays CID information transmitted by your local phone company. This information can include the phone number, date, and time. The unit stores call records for later review. When the memory is full, a new call record automatically replaces the oldest call record in memory. **NEW** appears on the display for calls received that have not been reviewed. **REP** appears on the display for calls received more than once which have not been reviewed.

Reviewing CID records

Press Δ or ∇ to review your Caller ID records. Caller ID records are stored in the order they are received.

- Press ∇ repeatedly to scroll through the call records from the most recent to the oldest.
- Press Δ repeatedly to scroll through the call records from the oldest to the newest.
- The screen displays **START/END** when the call log reaches the

15

end.

Deleting a caller ID record

- Press Δ or ∇ to scroll through the call log, press **del** when the desired entry is displayed on the screen.

Deleting all the caller ID records

- To delete all caller ID records, press and hold **del** when reviewing the call log. The screen then displays **DELETE ALL?** Press **del** again to confirm.

Dialing back

- Press Δ or ∇ to scroll through the call log when the telephone is in idle mode to review the Caller ID records.
- Press the **dial** key to dial back the phone number shown on the display.

If you programmed your local area code in the Set up menu

- Press Δ or ∇ to scroll through the call log when the telephone is in idle mode to go to the number you want to dial.
 - If you see a number with 7 digits (e.g., 555-1234), then the call was received from within your area code. However, this does not guarantee the call is a local call.
 - If you see a number with 11 digits (e.g., 1-234-555-1234), then the call received was not from your area code.

- Press the **dial** key, a 10 second timer also starts in the upper right side of the display, letting you know the time remaining time the unit returns to the Summary Screen. If you adjust the number to be dialed, the timer automatically resets itself.
- To dial the displayed number, pick up the handset before the

16

timer reaches 0.

If you did not program your local area code in the Set up menu

- Press Δ or ∇ to scroll through the call log when the telephone is in idle mode to go to the number you want to dial. You will only see digit numbers (e.g., 234-555-1234).
- Repeat steps 2 and 3 in the above section.

NOTE: If PICKUP PHONE shows on the display, no other changes to the number can be made. The information sent from the telephone company is known to be a valid number to dial back (available only in limited areas). Once you pick up the phone, the number is automatically dialed.

Visual message waiting indicator

When you have a message in the centralized voice mail system, this indicator will be lit. You need to contact your services provider for more details.

Caller ID display messages

The following special message indicate the status of a message or the unit:

Battery power level is low. Please replace the batteries as soon as possible in order to maintain Caller ID operation.

Troubleshooting Tips

Problem	Cause/solution
No dial tone	<ul style="list-style-type: none"> Check all cabling to make sure that all connections are secure and not damaged. Check the hook switch. Make sure it fully extends when the handset is lifted from the cradle of the base.

17

No display	<ul style="list-style-type: none"> Replace batteries. Make sure the batteries are properly installed.
No information is shown after the phone rings	<ul style="list-style-type: none"> In order to receive Caller ID records, you must subscribe to the standard name and number Caller ID service available through your local telephone company. Be sure to wait until the second ring before answering.
Phone does not ring	<ul style="list-style-type: none"> Make sure the ringer switch is not set to silent. You may have too many extension phones on your line. Unplug some extension phones. Check for a dial tone. If there is no dial tone, see solutions for No dial tone.
Other party cannot hear you	<ul style="list-style-type: none"> Make sure the telephone line cord is securely plugged in. Make sure extension phones are not in use at the same time you are using the phone. It is normal for the volume to drop when additional extension phones are used at the same time.
Cannot dial out	<ul style="list-style-type: none"> Make sure the T/P dialing mode is set to the type of phone service you are subscribed to.

General Product Care

- Avoid dropping the handset, as well as other rough treatment to the phone.
- Clean the phone only with a dry soft cloth.
- Never use cleaning agents, paint thinner, abrasive powder,

18

alcohol, or other chemical products to clean the unit. Doing so will damage the unit.

- Retain the original packaging in case you need to ship the phone at a later date.

CAUTION: Disconnect the phone cord from the wall outlet before installing or replacing the batteries.

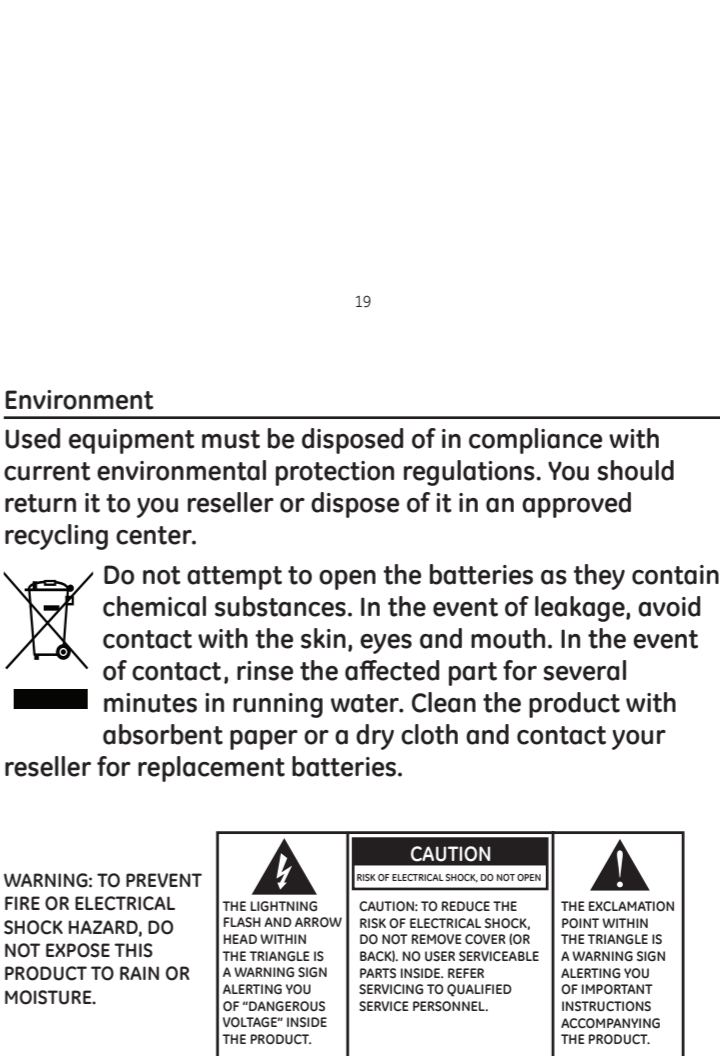
- Never install telephone wiring during a lightning storm.
- Never touch un-insulated telephone wires or terminals, unless the telephone line has been disconnected at the network interface.
- Install or modify telephone lines with caution.
- Never install a telephone in a wet or damp location.

Environment

Used equipment must be disposed of in compliance with current environmental protection regulations. You should return it to you reseller or dispose of it in an approved recycling center.

Do not attempt to open the batteries as they contain chemical substances. In the event of leakage, avoid contact with the skin, eyes and mouth. In the event of contact, rinse the affected part for several minutes in running water. Clean the product with absorbent paper or a dry cloth and contact your reseller for replacement batteries.

19



20