

## User's Guide model 28512



## DECT Cordless Telephone

Your new GE telephone system is EXPANDABLE up to 4 handsets



visit our website:  
[www.thehomephones.com](http://www.thehomephones.com)

Model 28512  
P/N:XXXXXXXX  
C.E. Version 1 10/2010  
Printed in China  
© 2010 CCT Tech Global Limited



is a trademark of  
The General Electric Company  
and is under license by  
CCT Tech Global Limited,  
Central, Hong Kong

## Introduction

**CAUTION:** When using telephone equipment, there are basic safety instructions that should always be followed. Refer to the Important safety instructions section in this book and save them for future reference.

This 28511 telephone is compliant with the DECT™ standard. It is designed to transmit and receive telephone calls and be collected to the certain public telephonic networks.

\*DECT is the trademark registered by ETSI.

**IMPORTANT:** Because cordless phones operate on electricity, you should have at least one phone in your home that isn't cordless, in case the power in your home goes out.

## Before you begin

### Parts Checklist

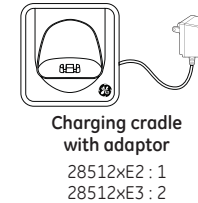
Make sure your package includes the items shown here.



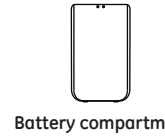
**Handset**  
28512xE1 : 1  
28512xE2 : 2  
28512xE3 : 3  
28512xE4 : 4



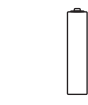
**Telephone base 28512**



**Charging cradle with adaptor**  
28512xE2 : 1  
28512xE3 : 2  
28512xE4 : 3



**Battery compartment cover**  
28512xE1 : 1  
28512xE2 : 2  
28512xE3 : 3  
28512xE4 : 4



**Battery**  
28512xE1 : 1  
28512xE2 : 2  
28512xE3 : 3  
28512xE4 : 4



**Telephone line cord**



**User's manual**

## Installation

### Important Installation Guidelines

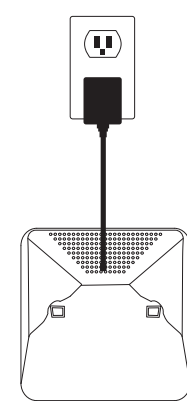
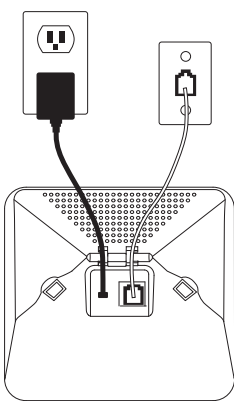
- Avoid sources of noise and heat, such as motors, fluorescent lighting, microwave ovens, heating appliances and direct sunlight.
- Avoid areas of excessive dust, moisture and low temperature.
- Avoid other cordless telephones or personal computers.
- Never install telephone wiring during a lightning storm.
- Never install telephone jacks in wet locations unless the jack is specifically designed for wet locations.
- Never touch non-insulated telephone wires or terminals, unless the telephone line has been disconnected at the network interface.
- Use caution when installing or modifying telephone lines.

## Installing the phone

### Telephone base and charging cradle installation

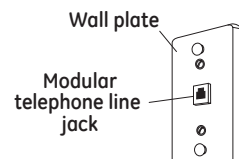
Install the telephone base and charging cradles as shown below. Make sure that the electrical outlet is not controlled by a wall switch.

If you have DSL high speed internet service, a DSL filter is required (not included). Contact your DSL service provider for more information about DSL filter.



## Telephone Jack Requirements

To use this phone, you need an RJ11C type modular telephone jack, which might look like the one pictured here, installed in your home. If you don't have a modular jack, call your local phone company to find out how to get one installed.



**CAUTION:** Use only the power adaptor that came with this unit. (Base: IA5060N, 100-240Vac/6Vdc/500mA. Charger: IA5060N, 100-240Vac/6Vdc/500mA). Using other power adaptors may damage the unit.

## Installing the Handset Battery

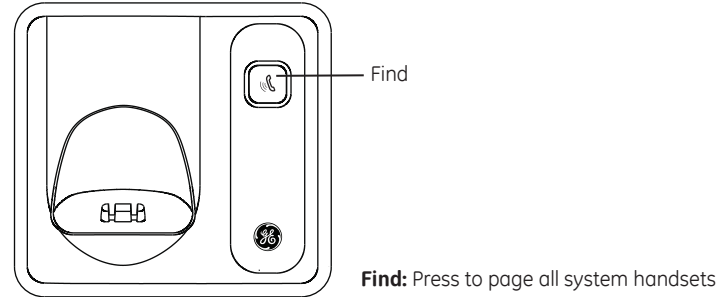
**CAUTION:** To reduce the risk of fire or personal injury, use only the CCT Tech Global Limited approved model H-AA550BX2 or 2SN-AA55H-S-J1 Nickel-metal Hydride battery (Ni-MH), which is compatible with this unit

**RISK OF EXPLOSION IF BATTERY IS REPLACED BY AN INCORRECT TYPE. DISPOSE OF USED BATTERIES ACCORDING TO THE INSTRUCTIONS.**

1. If the battery compartment cover is on the handset, slide the cover to remove.
2. Plug the battery connector securely into the socket inside the handset battery compartment
3. Place the battery and the wire inside the battery compartment
4. Align the cover flat against the battery compartment, then slide it towards the center of the handset until it clicks into place
5. Charge the handset by placing it in the telephone base or charging cradle. The battery icon on LCD is scrolling when the handset charges.

## Base layout

### Basic Base



**Find:** Press to page all system handsets

## Display

### Handset Display Items

Item	Meaning
	• Turn on when base unit in range • Blinking when base out of range
	• Turn on during review the phone book
	• Battery Level
	• Blinking when there is incoming call • Steady on during a call
	• Blinking when there is Voice mail
	• Turn on when Alarm set
	• Turn on when ringer off set
	• Turn on during review the call log and there is old record(s) in call log

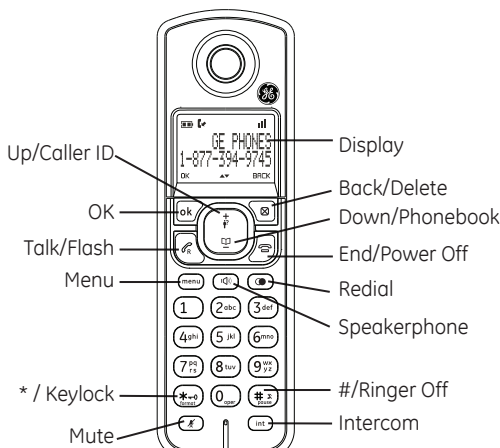
## Initial settings

### Display language

You can select change the display language.

1. [ menu ]
2. [ + ]/[ / ]/[ ]: "SETTINGS" → [OK]
3. [ + ]/[ / ]/[ ]: "LANGUAGE" → [OK]
4. [ + ]/[ / ]/[ ]: Select the desired setting
5. [ OK ] → [ ]

## Handset layout



**OK:** Press to select an item, or save an entry or settings.

**Delete:** Press to delete the last input number or letter. While in a menu, press to return the upper level without making changes.

**Up/Caller ID:** Press to review the call log when the telephone is not in use. While in a menu, press to scroll up. During a call, press to increase the listening volume.

**Down/Phonebook:** Press to review the phonebook when the telephone is not in use. While in a menu, press to scroll down. During a call, press to decrease the listening volume.

**Talk/Flash:** Press to make or answer a call. During a call, press to answer an incoming call when you receive a call waiting alert.

**Speakerphone:** Press to make or answer a call though speakerphone. During a call, press to switch between speakerphone and handset

**End/Power off:** During a call, press to hang up. During a programming, press to exit without making changes. Press and hold to power off the handset

**Menu:** Press to show menu.

**Redial:** Press to review redial list.

**\*/Keylock:** Press and hold to set the keylock (Keylock will de-activate when handset sit on the charge cradle)

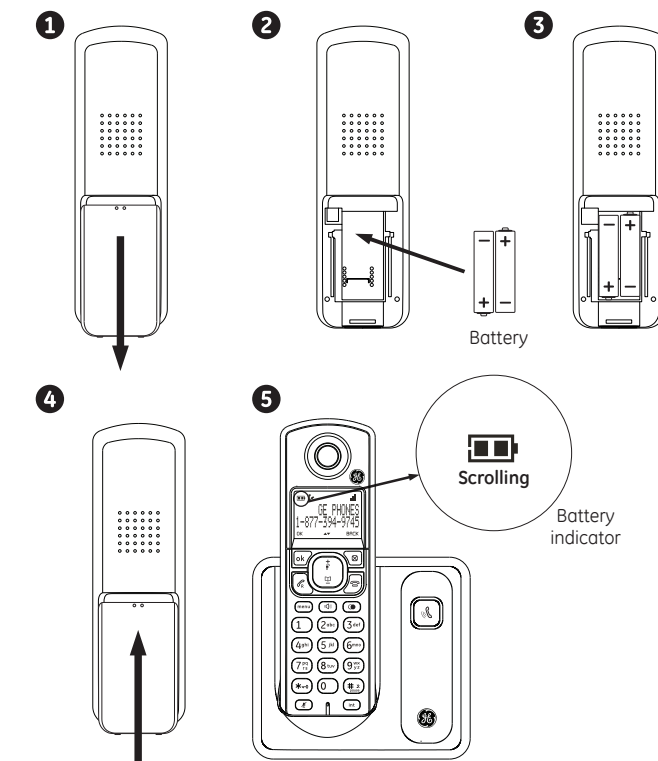
**#/Ringer off:** Press and hold to set the Ringer off when the telephone is not in use.

**Mute:** While on a call, press to mute the microphone.

**Intercom:** Set up the intercom between handset to handset.

## Please Fully Charge Before Using!

For optimum battery performance, charge the battery for 16 hours before use.



## Date format

1. [ menu ]
2. [ + ]/[ / ]/[ ]: "CLOCK&ALARM" → [OK]
3. [ + ]/[ / ]/[ ]: "SET FORMAT" → [OK]
4. [ + ]/[ / ]/[ ]: "DATE FORMAT" → [OK]
5. [ + ]/[ / ]/[ ]: Select the desired setting (MM/DD OR DD/MM)
6. [ OK ] → [ ]

## Time format

1. [ menu ]
2. [ + ]/[ / ]/[ ]: "CLOCK&ALARM" → [OK]
3. [ + ]/[ / ]/[ ]: "SET FORMAT" → [OK]
4. [ + ]/[ / ]/[ ]: "TIME FORMAT" → [OK]
5. [ + ]/[ / ]/[ ]: Select the desired setting (12 HOURS OR 24 HOURS)
6. [ OK ] → [ ]

## Ringer Volume

1. [ menu ]
  2. [ + ]/[ / ]/[ ]: "SETTINGS" → [OK]
  3. [ + ]/[ / ]/[ ]: "HANDSET TONE" → [OK]
  4. [ + ]/[ / ]/[ ]: "RINGER VOLUME" → [OK]
  5. [ + ]/[ / ]/[ ]: Select the desired setting (VOLUME 1 to 4 and OFF)
  6. [ OK ] → [ ]
- Note:** If Ringer off is selected, LCD will show "RINGER OFF" and [ ] will turn on.

## Ringer Tone

1. [ menu ]
  2. [ + ]/[ / ]/[ ]: "SETTINGS" → [OK]
  3. [ + ]/[ / ]/[ ]: "HANDSET TONE" → [OK]
  4. [ + ]/[ / ]/[ ]: "RINGER TONE" → [OK]
  5. [ + ]/[ / ]/[ ]: Select the desired setting (MELODY 1 to 10)
  6. [ OK ] → [ ]
- Note:** If Ringer off is selected, there is no preview during the ringer melody selection.

## Making calls

1. Lift the handset and dial the phone number
- To correct a digit, press [ ]
2. Press [ ] or [ ]
3. When you finish talking, press [ ] or place the handset on the base unit or charger.

## Adjusting the receiver volume

Press [ + ] or [ ] repeatedly while talking

## Answering calls

When a call is being received, the LCD and keypad backlight flash rapidly

1. Lift the handset and press [ ] or [ ] when the unit rings
2. When you finish talking, press [ ] or place the handset on the base unit or charger

## Conference

To join the conversation, press [ ] or [ ] when other handset is on an outside call.

## Making a call using the redial list

The last 5 numbers dialed are stored in the redial list (each 24 digits max)

1. Press [ ]
2. Press [ + ]/[ / ]/[ ]: Select the desired phone number
3. Press [ ] or [ ]

## Erasing a number in redial list

1. Press [ ]
2. Press [ + ]/[ / ]/[ ]: Select the desired phone number → [ menu ]
3. [ + ]/[ / ]/[ ]: "DELETE" or "DELETE ALL" → [OK]
4. Press [OK] to confirm

## Other Feature during a call

### Mute

While mute is turned on, you can hear the other party, but the other party cannot hear you.

1. Press [ ] during the call
2. To return the call, Press [ ] again

**Note:** LCD will show "MUTE ON" when mute feature activated

## For Call waiting or Call Waiting Caller ID service subscriber

To use call waiting, you must subscribe to call waiting from your service provider. This feature allows you to receive calls while you are already talking on the phone, you will hear a call waiting tone. If you subscribe to both Caller ID and Call Waiting with Caller ID services, the 2nd caller's information is displayed after you hear the call waiting tone on the handset.

1. Press [ ] to answer the 2nd call
2. To switch between calls, press [ ]

## Pause (for PBX/long distance service users)

A pause is sometimes required when making calls using a PBX or long distance service. When storing a calling card access number and/or PIN in the phonebook, a pause is also needed.

**Example:** If you need to dial the line access number "9" when making outside calls with PBX:

1. Press [9], then long press [ # ]
2. Dial the phone number and press [ ] or [ ]

**Note:** A 3 second pause is inserted each time, repeat as needed to create longer pauses

## Phonebook

### Adding record

1. [ menu ]
2. [ + ]/[ / ]/[ ]: "PHONEBOOK" → [OK]
3. [ + ]/[ / ]/[ ]: "ADD RECORDS" → [OK]
4. Enter the name (max. 12 character) → [OK]
5. Enter the number (max. 24 digits) → [OK]
6. [ ]

### Character Table for the entering names

Key	Character
[1]	Space 1 < > *
[2]	A B C 2
[3]	D E F 3
[4]	G H I 4
[5]	J L K 5
[6]	M N O 6
[7]	P Q R S 7
[8]	T U V 8
[9]	W X Y Z 9
[0]	0 - / \ # +

### Correct the mistake

Press [ ] to delete the characters or numbers

